

U.S. LABOR MARKET STATUS: Statistical Tables

Patrice Flynn

Spring 2004

FLYNN RESEARCH
Measuring Contributions to Society

U.S. LABOR MARKET IN 2003
Data: Bureau of Labor Statistics

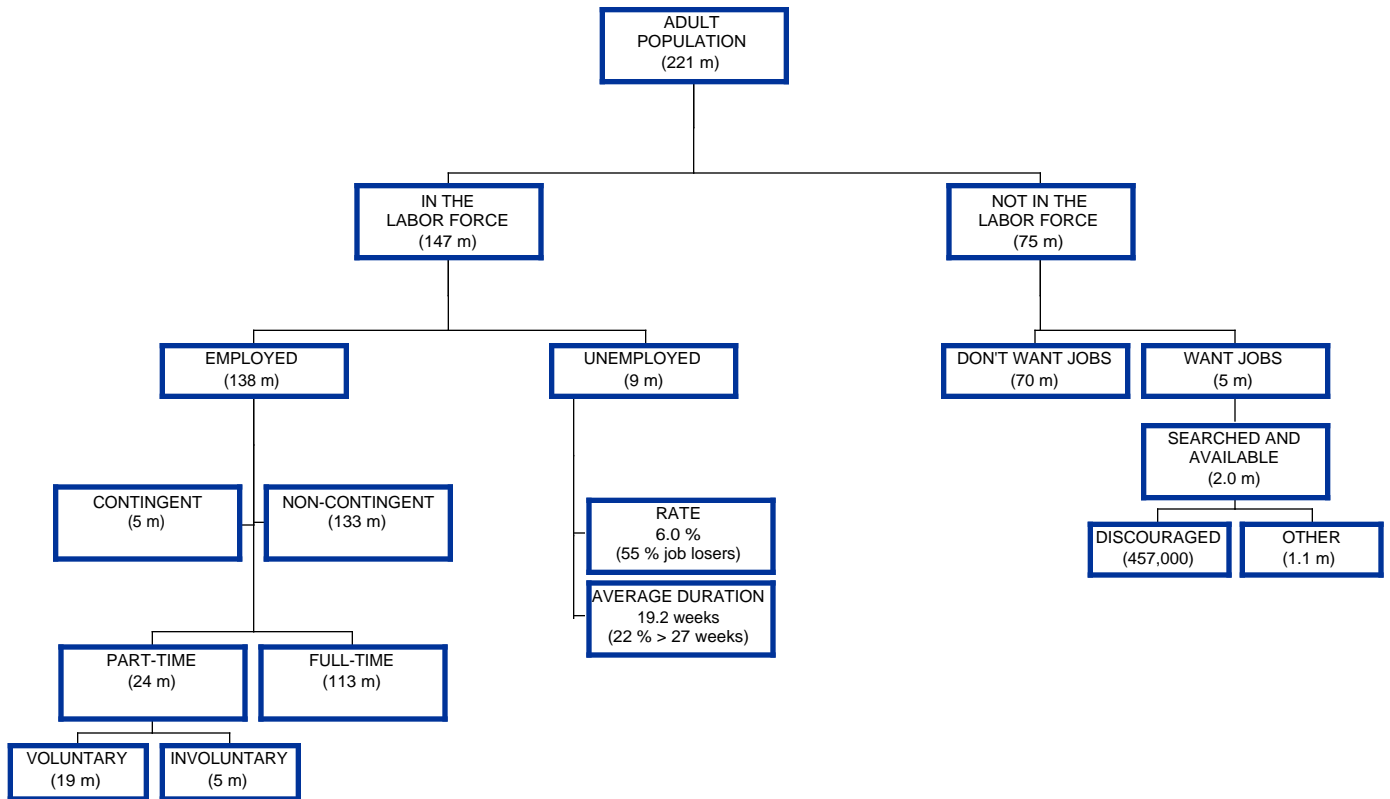


Table 1
Labor Force Status
of U.S. Civilian Population¹
1948 - 2003
(thousands; percent)

	Working Age Population ²	In Labor Force		Not in Labor Force	
		Number	Percent	Number	Percent
1948	103,068	60,621	58.8	42,447	41.2
1949	103,994	61,286	58.9	42,708	41.1
1950	104,995	62,208	59.2	42,787	40.8
1951	104,621	62,017	59.3	42,604	40.7
1952	105,231	62,138	59.0	43,093	41.0
1953	107,056	63,015	58.9	44,041	41.1
1954	108,321	63,643	58.8	44,678	41.2
1955	109,683	65,023	59.3	44,660	40.7
1956	110,954	66,552	60.0	44,402	40.0
1957	112,265	66,929	59.6	45,336	40.4
1958	113,727	67,639	59.5	46,088	40.5
1959	115,329	68,369	59.3	46,960	40.7
1960	117,245	69,628	59.4	47,617	40.6
1961	118,771	70,459	59.3	48,312	40.7
1962	120,153	70,614	58.8	49,539	41.2
1963	122,416	71,833	58.7	50,583	41.3
1964	124,485	73,091	58.7	51,394	41.3
1965	126,513	74,455	58.9	52,058	41.1
1966	128,058	75,770	59.2	52,288	40.8
1967	129,874	77,347	59.6	52,527	40.4
1968	132,028	78,737	59.6	53,291	40.4
1969	134,335	80,734	60.1	53,602	39.9
1970	137,085	82,771	60.4	54,315	39.6
1971	140,216	84,382	60.2	55,834	39.8
1972	144,126	87,034	60.4	57,091	39.6
1973	147,096	89,429	60.8	57,667	39.2
1974	150,120	91,949	61.3	58,171	38.7

continued

Table 1 continued

	Working Age Population	In Labor Force		Not in Labor Force	
		Number	Percent	Number	Percent
1975	153,153	93,775	61.2	59,377	38.8
1976	156,150	96,158	61.6	59,991	38.4
1977	159,033	99,009	62.3	60,025	37.7
1978	161,910	102,251	63.2	59,659	36.8
1979	164,863	104,962	63.7	59,900	36.3
1980	167,745	106,940	63.8	60,806	36.2
1981	170,130	108,670	63.9	61,460	36.1
1982	172,271	110,204	64.0	62,067	36.0
1983	174,215	111,550	64.0	62,665	36.0
1984	176,383	113,544	64.4	62,839	35.6
1985	178,206	115,461	64.8	62,744	35.2
1986	180,587	117,834	65.3	62,752	34.7
1987	182,753	119,865	65.6	62,888	34.4
1988	184,613	121,669	65.9	62,944	34.1
1989	186,393	123,869	66.5	62,523	33.5
1990	189,164	125,840	66.5	63,324	33.5
1991	190,925	126,346	66.2	64,578	33.8
1992	192,805	128,105	66.4	64,700	33.6
1993	194,838	129,200	66.3	65,638	33.7
1994	196,814	131,056	66.6	65,758	33.4
1995	198,584	132,304	66.6	66,280	33.4
1996	200,591	133,943	66.8	66,647	33.2
1997	203,133	136,297	67.1	66,837	32.9
1998	205,220	137,673	67.1	67,547	32.9
1999	207,753	139,368	67.1	68,385	32.9
2000	212,577	142,583	67.1	69,994	32.9
2001	215,092	143,734	66.8	71,359	33.2
2002	217,570	144,863	66.6	72,707	33.4
2003	221,168	146,510	66.2	74,658	33.8

¹ Numbers exclude military personnel and people who are living in institutions such as prisons, residential care facilities, and homes for the elderly. Data are seasonally adjusted. Numbers may not sum to totals due to rounding.

²1929 - 1946 persons 14 and older; thereafter 16 and older.

Table 2
U.S. Civilian Labor Force
1929-2003
(thousands; percent)

Year	Labor Force	Employed	Unemployed	Unemployment Rate
1929	49,180	47,630	1,550	3.2
1933	51,590	38,760	12,830	24.9
1939	55,230	45,750	9,480	17.2
1940	55,640	47,520	8,120	14.6
1941	55,910	50,350	5,560	9.9
1942	56,410	53,750	2,660	4.7
1943	55,540	54,470	1,070	1.9
1944	54,630	53,960	670	1.2
1945	53,860	52,820	1,040	1.9
1946	57,520	55,250	2,270	3.9
1947	59,350	57,038	2,311	3.9
1948	60,621	58,343	2,276	3.8
1949	61,286	57,651	3,637	5.9
1950	62,208	58,918	3,288	5.3
1951	62,017	59,961	2,055	3.3
1952	62,138	60,250	1,883	3.0
1953	63,015	61,179	1,834	2.9
1954	63,643	60,109	3,532	5.5
1955	65,023	62,170	2,852	4.4
1956	66,552	63,799	2,750	4.1
1957	66,929	64,071	2,859	4.3
1958	67,639	63,036	4,602	6.8
1959	68,369	64,630	3,740	5.5
1960	69,628	65,778	3,852	5.5
1961	70,459	65,746	4,714	6.7
1962	70,614	66,702	3,911	5.5
1963	71,833	67,762	4,070	5.7
1964	73,091	69,305	3,786	5.2
1965	74,455	71,088	3,366	4.5
1966	75,770	72,895	2,875	3.8
1967	77,347	74,372	2,975	3.8
1968	78,737	75,920	2,817	3.6
1969	80,734	77,902	2,832	3.5

continued

Table 2 continued

Year	Labor Force	Employed	Unemployed	Unemployment Rate
1970	82,771	78,678	4,093	4.9
1971	84,382	79,367	5,016	5.9
1972	87,034	82,153	4,882	5.6
1973	89,429	85,064	4,365	4.9
1974	91,949	86,794	5,156	5.6
1975	93,775	85,846	7,929	8.5
1976	96,158	88,752	7,406	7.7
1977	99,009	92,017	6,991	7.1
1978	102,251	96,048	6,202	6.1
1979	104,962	98,824	6,137	5.8
1980	106,940	99,302	7,637	7.1
1981	108,670	100,397	8,273	7.6
1982	110,204	99,526	10,678	9.7
1983	111,550	100,834	10,717	9.6
1984	113,544	105,005	8,539	7.5
1985	115,461	107,150	8,312	7.2
1986	117,834	109,597	8,237	7.0
1987	119,865	112,440	7,425	6.2
1988	121,669	114,968	6,701	5.5
1989	123,869	117,342	6,528	5.3
1990	125,840	118,793	7,047	5.6
1991	126,346	117,718	8,628	6.8
1992	128,105	118,492	9,613	7.5
1993	129,200	120,259	8,940	6.9
1994 ¹	131,056	123,060	7,996	6.1
1995	132,304	124,900	7,404	5.6
1996	133,943	126,708	7,236	5.4
1997	136,297	129,558	6,739	4.9
1998	137,673	131,463	6,210	4.5
1999	139,368	133,488	5,880	4.2
2000	142,583	136,891	5,692	4.0
2001	143,734	136,933	6,801	4.7
2002	144,863	136,485	8,378	5.8
2003	146,510	137,736	8,774	6.0

¹ Not strictly comparable with earlier data due to population adjustments and a major redesign of the CPS household survey.

Source: U.S. Department of Labor, Bureau of Labor Statistics.

Table 3
Labor Force Participation Rates
of Women and Men
1948-2003
(percent)

Year	Total	Women	Men
1948	58.8	32.7	86.6
1949	58.9	33.1	86.4
1950	59.2	33.9	86.4
1951	59.3	34.6	86.3
1952	59.0	34.7	86.3
1953	58.9	34.4	86.0
1954	58.8	34.6	85.5
1955	59.3	35.7	85.4
1956	60.0	36.9	85.5
1957	59.6	36.9	84.8
1958	59.5	37.1	84.2
1959	59.3	37.1	83.7
1960	59.4	37.7	83.3
1961	59.3	38.1	82.9
1962	58.8	37.9	82.0
1963	58.7	38.3	81.4
1964	58.7	38.7	81.0
1965	58.9	39.3	80.7
1966	59.2	40.3	80.4
1967	59.6	41.1	80.4
1968	59.6	41.6	80.1
1969	60.1	42.7	79.8
1970	60.4	43.3	79.7
1971	60.2	43.4	79.1
1972	60.4	43.9	78.9
1973	60.8	44.7	78.8
1974	61.3	45.7	78.7
1975	61.2	46.3	77.9
1976	61.6	47.3	77.5
1977	62.3	48.4	77.7
1978	63.2	50.0	77.9
1979	63.7	50.9	77.8

continued

Table 3 continued

Year	Total	Women	Men
1980	63.8	51.5	77.4
1981	63.9	52.1	77.0
1982	64.0	52.6	76.6
1983	64.0	52.9	76.4
1984	64.4	53.6	76.4
1985	64.8	54.5	76.3
1986	65.3	55.3	76.3
1987	65.6	56.0	76.2
1988	65.9	56.6	76.2
1989	66.5	57.4	76.4
1990	66.5	57.5	76.4
1991	66.2	57.4	75.8
1992	66.4	57.8	75.8
1993	66.3	57.9	75.4
1994	66.6	58.8	75.1
1995	66.6	58.9	75.0
1996	66.8	59.3	74.9
1997	67.1	59.8	75.0
1998	67.1	59.8	74.9
1999	67.1	60.0	74.7
2000	67.1	59.9	74.8
2001	66.8	59.8	74.4
2002	66.6	59.6	74.1
2003	66.2	59.5	73.5

Source: U.S. Department of Labor, Bureau of Labor Statistics.

Table 4
Employment-to-Population Ratios
for Women and Men
1948-2003
(percent)

Year	Total	Women	Men
1948	56.6	31.3	83.5
1949	55.4	31.2	81.3
1950	56.1	32.0	82.0
1951	57.3	33.1	84.0
1952	57.3	33.4	83.9
1953	57.1	33.3	83.6
1954	55.5	32.5	81.0
1955	56.7	34.0	81.8
1956	57.5	35.1	82.3
1957	57.1	35.1	81.3
1958	55.4	34.5	78.5
1959	56.0	35.0	79.3
1960	56.1	35.5	78.9
1961	55.4	35.4	77.6
1962	55.5	35.6	77.7
1963	55.4	35.8	77.1
1964	55.7	36.3	77.3
1965	56.2	37.1	77.5
1966	56.9	38.3	77.9
1967	57.3	39.0	78.0
1968	57.5	39.6	77.8
1969	58.0	40.7	77.6
1970	57.4	40.8	76.2
1971	56.6	40.4	74.9
1972	57.0	41.0	75.0
1973	57.8	42.0	75.5
1974	57.8	42.6	74.9
1975	56.1	42.0	71.7
1976	56.8	43.2	72.0
1977	57.9	44.5	72.8
1978	59.3	46.4	73.8
1979	59.9	47.5	73.8

continued

Table 4 continued

Year	Total	Women	Men
1980	59.2	47.7	72.0
1981	59.0	48.0	71.3
1982	57.8	47.4	69.0
1983	57.9	48.0	68.8
1984	59.5	49.5	70.7
1985	60.1	50.4	70.9
1986	60.7	51.4	71.0
1987	61.5	52.5	71.5
1988	62.3	53.4	72.0
1989	63.0	54.3	72.5
1990	62.8	54.3	72.0
1991	61.7	53.7	70.4
1992	61.5	53.8	69.8
1993	61.7	54.1	70.0
1994	62.5	55.3	70.4
1995	62.9	55.6	70.8
1996	63.2	56.0	70.9
1997	63.8	56.8	71.3
1998	64.1	57.1	71.6
1999	64.3	57.4	71.6
2000	64.4	57.5	71.9
2001	63.7	57.0	70.9
2002	62.7	56.3	69.7
2003	62.3	56.1	68.9

Source: U.S. Department of Labor, Bureau of Labor Statistics.

Table 5
Selected Labor Force Participation Rates
by Gender and Ethnicity
1970 - 2003
(percent)

	1960	1970	1980	1990	2000	2001	2002	2003
Total	59.4	60.4	63.8	66.5	67.1	66.8	66.6	66.2
Women	37.7	43.3	51.5	57.5	59.9	59.8	59.6	59.5
Men	83.3	79.7	77.4	76.4	74.8	74.4	74.1	73.5
Asian	–	–	–	–	67.2	67.2	67.2	66.4
Black	–	–	61.0	64.0	65.8	65.3	64.8	64.3
Hispanic	–	–	64.0	67.7	69.7	69.5	69.1	68.3
White	58.8	60.2	64.1	66.9	67.4	67.0	66.8	66.5

Source: U.S. Department of Labor, Bureau of Labor Statistics. Dash indicates data were not collected.

Table 6
Selected Unemployment Rates
1970-2003
(percent)

	1973	1980	1990	2000	2001	2002	2003
Total	4.9	7.1	5.6	4.0	4.7	5.8	6.0
Women, 20 and over	4.9	6.4	4.9	3.6	4.1	5.1	5.1
Men, 20 and over	3.3	5.9	5.0	3.3	4.2	5.3	5.6
Teenagers, 16-19	14.5	17.8	15.5	13.1	14.7	16.5	17.5
White	4.3	6.3	4.8	3.5	4.2	5.1	5.2
Women, 20 and over	4.3	5.6	4.1	3.1	3.6	4.4	4.4
Men, 20 and over	3.0	5.3	4.3	2.8	3.7	4.7	5.0
Teenagers, 16-19	12.6	15.5	13.5	11.4	12.7	14.5	15.2
Black *	9.4	14.3	11.4	7.6	8.6	10.2	10.8
Women, 20 and over	8.6	11.9	9.7	6.3	7.0	8.8	9.2
Men, 20 and over	6.0	12.4	10.4	7.0	8.0	9.5	10.3
Teenagers, 16-19	31.5	38.5	30.9	24.7	29.0	29.8	33.0
Hispanic **	7.5	10.1	8.2	5.7	6.6	7.5	7.7
Women, 20 and over	7.3	9.2	7.5	5.9	6.6	7.2	7.8
Men, 20 and over	5.4	8.3	7.0	4.2	5.2	6.4	6.4
Teenagers, 16-19	19.7	22.5	19.5	16.7	17.7	20.1	20.0
Asian ***	—	—	—	3.6	4.5	5.9	6.0

* Data first recorded in 1972.

** Data first recorded in 1973.

*** Data first recorded in 2000.

Source: U.S. Department of Labor, Bureau of Labor Statistics.

Table 7
Reasons for Unemployment
1968-2003
(percent)

Year	Job Losers	Job Leavers	Re-entrants	New Entrants
1968	38.0	15.3	32.3	14.4
1969	35.9	15.4	34.1	14.6
1970	44.2	13.4	30.0	12.3
1971	46.3	11.8	29.3	12.6
1972	43.2	13.1	29.8	13.9
1973	38.8	15.6	30.7	14.9
1974	43.5	14.9	28.4	13.2
1975	55.3	10.4	23.9	10.4
1976	49.7	12.2	26.0	12.1
1977	45.3	13.0	28.1	13.6
1978	41.7	14.1	29.9	14.3
1979	42.9	14.3	29.4	13.3
1980	51.7	11.7	25.2	11.4
1981	51.6	11.2	25.4	11.9
1982	58.7	7.9	22.3	11.1
1983	58.4	7.7	22.5	11.3
1984	51.8	9.6	25.6	13.0
1985	49.8	10.6	27.1	12.5
1986	49.0	12.3	26.2	12.5
1987	48.0	13.0	26.6	12.4
1988	46.1	14.7	27.0	12.2
1989	45.7	15.7	28.2	10.4
1990	48.1	14.8	27.4	9.7
1991	54.4	11.6	24.8	9.2
1992	56.1	10.4	23.8	9.7
1993	54.2	10.9	24.6	10.3
1994*	47.7	9.9	34.8	7.6

continued

Table 7 continued

Year	Job Losers	Job Leavers	Re-entrants	New Entrants
1995	47.0	11.1	34.1	7.8
1996	46.6	10.7	34.7	8.0
1997	45.1	11.8	34.7	8.4
1998	45.4	11.8	34.3	8.4
1999	44.6	13.3	34.1	8.0
2000	44.2	13.7	34.5	7.6
2001	51.1	12.3	29.9	6.8
2002	55.0	10.3	28.3	6.4
2003	55.1	9.3	28.2	7.3

* Beginning January 1994, job losers also includes persons who completed temporary jobs.

Source: U.S. Department of Labor, Bureau of Labor Statistics.

Table 8
Duration of Unemployment
1960-2003
(weeks)

Year	Mean	Median	Year	Mean	Median
1960	12.8	–	1985	15.6	6.8
1961	15.6	–	1986	15.0	6.9
1962	14.7	–	1987	14.5	6.5
1963	14.0	–	1988	13.5	5.9
1964	13.3	–	1989	11.9	4.8
1965	11.8	–	1990	12.0	5.3
1966	10.4	–	1991	13.7	6.8
1967	8.7	–	1992	17.7	8.7
1968	8.4	4.5	1993	18.0	8.3
1969	7.8	4.4	1994	18.8	9.2
1970	8.6	4.9	1995	16.6	8.3
1971	11.3	6.3	1996	16.7	8.3
1972	12.0	6.2	1997	15.8	8.0
1973	10.0	5.2	1998	14.5	6.7
1974	9.8	5.2	1999	13.4	6.4
1975	14.2	8.4	2000	12.6	5.9
1976	15.8	8.2	2001	13.1	6.8
1977	14.3	7.0	2002	16.6	9.1
1978	11.9	5.9	2003	19.2	10.1
1979	10.8	5.4			
1980	11.9	6.5			
1981	13.7	6.9			
1982	15.6	8.7			
1983	20.0	10.1			
1984	18.2	7.9			

Source: U.S. Department of Labor, Bureau of Labor Statistics. Dash indicates data not available.

Table 9
Multiple Job Holders by Gender
1999 - 2003
(thousands)

Characteristics	1999		2000		2001		2002		2003	
	Number	Percent	Number	Percent	Number	Percent	Number	Percent	Number	Percent
Total	7,802	5.8	7,604	5.6	7,357	5.4	7,291	5.3	7,315	5.3
Women	3,698	6.0	3,608	5.7	3,523	5.5	3,557	5.6	3,599	5.6
Men	4,104	5.7	3,996	5.5	3,834	5.2	3,734	5.1	3,716	5.1

Source: U.S. Department of Labor, Bureau of Labor Statistics.

Table 10
Alternative Work Arrangements
2001
(thousands)

Characteristics	Independent Contractors	On-call and Day Laborers	Temporary Help Agency Workers	Workers Provided by Contract Firms
Total	8,585	2,089	1,169	633
Women	3,048	981	689	187
Men	5,537	1,109	480	447
Full-time	6,452	1,100	925	568
Part-time	2,133	989	244	65

Source: U.S. Department of Labor, Bureau of Labor Statistics. Numbers may not sum to totals due to rounding.

Table 11
Distribution of Full-time and Part-time Workers
by Age, Gender, and Race
2003
(thousands)

Characteristics	Employed Workers	Full-time		Part-time	
	Total	Total	Percent	Total	Percent
Total	137,736	113,324	82	24,412	18
16-19	5,347	1,174	22	4,173	78
20 and over	131,817	111,578	85	20,239	15
55 and over	21,207	16,273	77	4,934	23
Women	64,405	47,946	74	16,459	26
Men	73,332	65,379	89	7,953	11
Asian	5,756	4,850	84	906	16
Black	14,739	12,607	86	2,132	14
Hispanic	17,373	14,798	85	2,575	15
White	114,235	93,465	82	20,770	18

Source: U.S. Department of Labor, Bureau of Labor Statistics. Hispanics are included in both the White and Black population groups.

Table 12
Contingent and Noncontingent Workers
2001
(thousands)

Characteristics	Employed Workers	Contingent		Noncontingent	
		Total	Percent	Total	Percent
Total	134,605	5,369	100	129,236	100
Women	63,229	2,683	50	60,546	47
Men	71,376	2,686	50	68,690	53
Full-time	110,570	3,124	58	107,446	83
Part-time	24,035	2,245	42	21,789	17

Source: U.S. Department of Labor, Bureau of Labor Statistics. Contingent workers include all workers whose jobs were temporary or not expected to continue.

Table 13
Persons Not in the Labor Force
2003
(thousands)

Category	Total	Age			Gender	
		16 to 24	25 to 54	55 +	Women	Men
Total	74,658	13,800	20,980	39,878	46,461	28,197
Do not want a job now	69,932	12,079	18,857	38,996	43,859	26,073
Want a job	4,726	1,721	2,124	882	2,603	2,124
In previous year:						
Did not search for work	2,631	882	1,129	620	1,503	1,127
Searched for work	2,096	838	995	262	1,099	996
Not available to work now	564	274	248	43	333	231
Available to work now	1,531	565	747	220	766	765
Reason for not currently looking:						
Discouraged by job prospects ¹	457	134	248	75	190	266
Reasons other than discouragement	1,075	431	499	145	576	499
Family responsibilities	153	37	94	22	118	35
In school or training	239	194	42	3	114	125
Ill health or disability	113	15	72	26	62	51
Other ²	570	184	292	94	282	288

¹ Includes believes no work available, could not find work, lacks necessary schooling or training, employer thinks too young or old, and other types of discrimination.

² Includes those who did not actively look for work in the prior 4 weeks for such reasons as child-care and transportation problems.

Source: U.S. Department of Labor, Bureau of Labor Statistics.

Table 14
Displaced Workers by Selected Characteristics¹
2002
(thousands)

	Total	Employment Status			Reason for Job Loss		
		Employed	Un-employed	Not in labor force	Plant or company closed down or moved	Slack work	Position or shift abolished
Total							
Total, 20 and over	3,969	63.6	21.2	15.2	47.2	25.4	27.3
20 to 24	132	68.7	15.4	15.8	45.4	49.8	4.8
25 to 54	3,117	67.5	21.7	10.8	46.5	25.3	28.2
55 to 64	593	50.9	20.3	28.8	50.7	20.1	29.2
65 and over	127	19.8	20.7	59.5	50.9	28.1	21.0
Women							
Total, 20 and over	1,783	61.6	19.3	19.1	50.6	22.5	26.9
20 to 24	77	65.8	17.9	16.3	46.2	47.9	5.9
25 to 54	1,377	65.7	20.2	14.2	51.8	20.7	27.5
55 to 64	266	45.8	17.3	36.8	44.8	24.5	30.7
65 and over	62	*	*	*	*	*	*
Men							
Total, 20 and over	2,186	65.2	22.8	12.0	44.5	27.8	27.7
20 to 24	55	*	*	*	*	*	*
25 to 54	1,740	69.0	22.9	8.1	42.3	28.9	28.7
55 to 64	326	55.0	22.7	22.3	55.6	16.5	27.9
65 and over	65	*	*	*	*	*	*
Black							
Total, 20 and over	474	57.7	22.3	20.0	49.2	29.5	21.3
Women	236	54.6	27.0	18.4	55.1	26.5	18.4
Men	238	60.7	17.7	21.6	43.3	32.5	24.1
Hispanic origin							
Total, 20 and over	335	55.0	31.0	14.0	50.1	33.9	16.0
Women	177	55.0	30.6	14.4	59.2	25.6	15.2
Men	158	55.0	31.4	13.6	39.9	43.1	17.0

continued

Table 14 continued

	Total	Employment Status			Reason for Job Loss		
		Employed	Un-employed	Not in labor force	Plant or company closed down or moved	Slack work	Position or shift abolished
White							
Total, 20 and over	3,351	64.7	20.8	14.5	46.9	24.7	28.4
Women	1,491	62.8	17.8	19.4	49.8	21.9	28.3
Men	1,861	66.2	23.2	10.5	44.6	27.0	28.4
<p>¹ Displaced Workers refers to persons who had 3 or more years of tenure on a job they had lost or left between January 1999 and December 2001 because of plant or company closings or moves, insufficient work, or the abolishment of their positions or shifts. Hispanics are included in both the White and Black population groups.</p> <p>* Data not shown where base is less than 75,000.</p> <p>Source: U.S. Department of Labor, Bureau of Labor Statistics.</p>							

Table 15
Discouraged Workers Not in the Labor Force¹
by Gender
1994 - 2003

Year	Total	Women	Men
1994	500,000	204,000	296,000
1995	410,000	166,000	245,000
1996	397,000	164,000	233,000
1997	343,000	143,000	200,000
1998	331,000	133,000	198,000
1999	273,000	113,000	161,000
2000	262,000	101,000	161,000
2001	321,000	129,000	192,000
2002	369,000	143,000	226,000
2003	457,000	190,000	266,000

¹ Discouraged workers, a subset of the marginally attached, have given a job-market related reason for not currently looking for a job. Marginally attached workers are persons who currently are neither working nor looking for work but indicate that they want and are available for a job and have looked for work sometime in the recent past.

Source: U.S. Department of Labor, Bureau of Labor Statistics. Numbers may not sum to totals due to rounding.